



\$ 395,000



1610 Sculac Road, Bethlehem, PA 18020

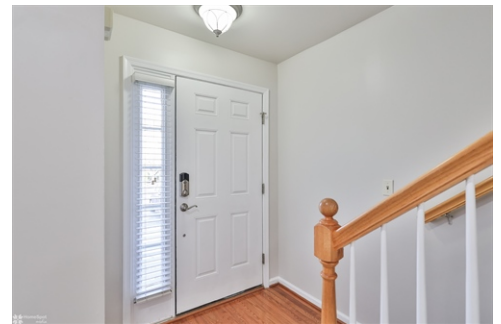
- » Beds: 3 | Baths: 2 Full, 1 Half
- » MLS #: 768933
- » Single Family | 2,088 ft<sup>2</sup>
- » More Info: [1610Sculac.IsForSale.com](https://www.1610Sculac.IsForSale.com)



**Renaldi Team**  
 (484) 788-8682 (Direct)  
 (610) 691-0535 (Office)  
[marketing@homespotmedia.com](mailto:marketing@homespotmedia.com)

**CENTURY 21®**

Pinnacle  
 3001 Emrick Boulevard  
 Bethlehem, PA 18020  
 (610) 691-0535



#### Remarks

Welcome to 1610 Sculac Road — a beautifully updated end-unit townhome in Bethlehem offering 3 bedrooms, 2.5 baths, a partially finished lower level, & an attached garage. Situated in a quiet neighborhood w mature trees & abundant natural light, this home blends modern updates w a highly functional layout perfect for everyday living. Step inside to an inviting entryway w brand-new flooring & fresh paint throughout. The spacious living room features recessed lighting & large windows, creating a bright & open feel. The dining area flows seamlessly into the updated kitchen, offering generous counter space, an island, & direct access to the elevated balcony—ideal for outdoor dining or morning coffee. Upstairs, the home features three well-sized bedrooms, including a large primary suite complete w a walk-in closet & a private ensuite bathroom featuring a soaking tub, double vanity, & separate shower. Two additional bedrooms & a full hallway bath complete the second level, along with an landing overlook that brings light into the home. The partially finished lower level offers incredible flexibility w a spacious recreation room & a dedicated office—perfect for working from home. a ovm setup. or additional living space. Outside. enjoy a low-maintenance yard. private driveway. &

